

1.2 ÜRÜN BİLGİ SAYFASI

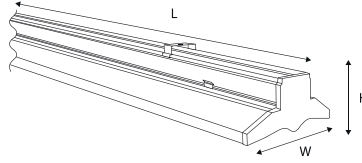
DATASHEET

LEDLINE 1xT5

LEDLINE 1xT5 – LİNEER LED AYDINLATMA ARMATÜRÜ

LEDLINE 1xT5 - LINEAR LED LIGHTING FIXTURE

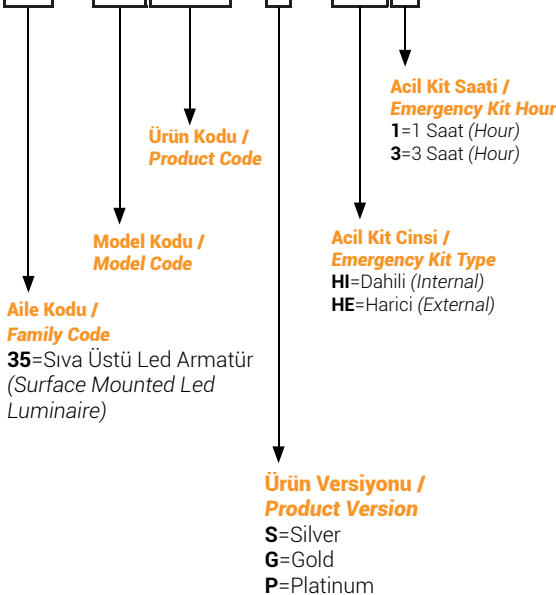
ÖLÇÜLER / DIMENSIONS



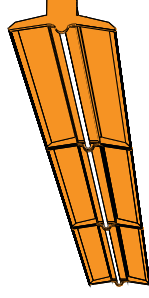
Ürün Kodu / Product Code	Güç / Power (W)	Verim / Efficiency (Lm/W)	Işık Akısı / Luminous Flux (Lm)	Enerji Etiketi / Energy Label	Ürün Ölçü (B,E,Y) / Dimension (L,W,H)	Ürün Ağırlık / Product W. (Kg)	Paket Ölçü (B,E,Y) / Product S. (L,W,H)	Paket Ağırlık / Package W. (Kg)
35-35419-G	1x19 W	161 Lm/W	3.059 Lm	B	1475x175x70 mm	3,8 Kg	1530x190x100 mm	60 Kg (16ad/16pcs.)
35-35420-G	2x(1x19 W)	161 Lm/W	6.118 Lm	B	2950x175x70 mm	7,6 Kg	3060x190x100 mm	60 Kg (8ad/8pcs.)
35-35422-G	1x22 W	159 Lm/W	3.498 Lm	B	1475x175x70 mm	3,8 Kg	1530x190x100 mm	60 Kg (16ad/16pcs.)
35-35423-G	2x(1x22 W)	159 Lm/W	6.996 Lm	B	2950x175x70 mm	7,6 Kg	3060x190x100 mm	60 Kg (8ad/8pcs.)
35-35424-G	1x27 W	158 Lm/W	4.266 Lm	B	1475x175x70 mm	3,8 Kg	1530x190x100 mm	60 Kg (16ad/16pcs.)
35-35425-G	2x(1x27 W)	158 Lm/W	8.532 Lm	B	2950x175x70 mm	7,6 Kg	3060x190x100 mm	60 Kg (8ad/8pcs.)
35-35435-G	1x35 W	145 Lm/W	5.075 Lm	C	1475x175x70 mm	3,8 Kg	1530x190x100 mm	60 Kg (16ad/16pcs.)
35-35436-G	2x(1x35 W)	145 Lm/W	10.150 Lm	C	2950x175x70 mm	7,6 Kg	3060x190x100 mm	60 Kg (8ad/8pcs.)

*HE1,HE3,HI1 acil kit opsiyonu bulunmaktadır. / There is an HE1,HE3,HI1 emergency kit option.

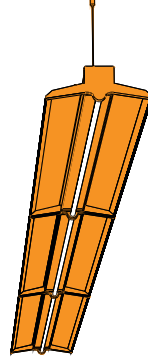
35 - 35XXX - X - HXX



Tavan Montaj Aparatlı
Montaj Modeli / Mounting
Model with Ceiling
Mounting Apparatus



Askı Telli Montaj Modeli /
Suspended Wire Mounting
Model



OPTİK ÖZELLİKLER / OPTICAL PROPERTIES

Renk Sıcaklığı / Color Temperature (CCT)	3000-4000-6000K
Işıma Açısı / Beam Angle	C120°
Renk Geri Verim İndeksi / Color Rendering Index (CRI)	>80
Standart Sapma Renk Eşleşmesi / SDCM	MacAdam 3
Sürücü / Driver	Dahili Sürücü / Internal Drive

ELEKTRİKSEL ÖZELLİKLER / ELECTRICAL PROPERTIES

Giriş Voltajı, Frekans / Input Voltage, Frequency	180~260 AC/V 50~60 Hz
Lamba Tipi / Lamp Type	T5 LED Tüp / T5 LED Tube
Güç Faktörü (PF) / Power Factor	>95
Acil Aydınlatma / Emergency Lighting	Gövde İçi Dahili 1-3 Saat Bataryalı Acil Kit (Opsiyonel), Acil Aydınlatma LED Tüp İçi Dahili 1-3 Saat (Opsiyonel) / Internal Body Internal 1-3 Hours Battery Emergency Kit (Optional), Emergency Lighting Inside LED Tube Internal 1-3 Hours (Optional)
Acil Aydınlatma Gücü / Emergency Lighting Power	%10-15
IEC Koruma Sınıfı (Armatür) / IEC Protection Class (Armature)	CLASS (I)
Sensör / Sensor	Harekete & Sese Duyarlı Sensör (Opsiyonel) / Motion & Sound Sensitive Sensor (Optional)
Otomasyon / Automation	Şebeke Girişi Pano veya Harici Kontrol Modülleri ile Kontrol Edilebilir / Mains Input can be Controlled by Panel or External Control Modules
Dimli / Dimmable	Yok / No

MEKANİK ÖZELLİKLER / MECHANICAL PROPERTIES

Montaj Seçenekleri / Mounting Options	Paslanmaz Yay Çelik Tavan Bağlantısı veya İstenilen Uzunlukta Sarkıtma / Stainless Arrow Steel Ceiling Mount or Suspended in Desired Length
IP - Koruma sınıfı / IP - Protection Class	IP20
Montaj Tipi / Mounting Type	Sıva Üstü, Sarkıt / Surface Mounted, Pendant
Montaj Yeri / Mounting Location	Tavan / Ceiling
Şebeke Bağlantısı / Network Connection	3x NYAF ve Monofaz Topraklı Bağlantı / 3x NYAF and Single Phase Ground Connection
Uygulama Yüksekliği / Application Height	2.80~3.50m

SICAKLIK VE ÇALIŞMA KOŞULLARI / TEMPERATURES AND OPERATING CONDITIONS

Çalışma Isısı (Oda Sıcaklığında) / Working Temperature	-20°C...+50°C
--	---------------

DEPOLAMA BİLGİLERİ / STORAGE INFORMATION

Depolamada Sıcaklık Aralığı / Temperature Range at Storage	-30°C...+70°C
--	---------------

RENKLER & MATERYAL / COLORS & MATERIAL

Gövde Malzemesi / Body Material	Alüminyum Ekstrüzyon Profil / Aluminum Extrusion Profile
Gövde Rengi Seçenekleri / Body Color Options	Siyah(RAL:9005), Beyaz(RAL:9016), Gri(RAL:9006), RAL(Opsiyonel) / Black(RAL: 9005), White(RAL:9016), Gray(RAL:9006), RAL(Optional)
Ürün Boyası / Product Paint	Elektrostatik Toz Boya / Electrostatic Powder Coating

ÜRÜNÜN YAŞAM SÜRESİ / PRODUCT LIFE TIME

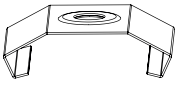
Anahtarlama Döngü Sayısı / Number of Switching Cycles	5000 h
Ömür / Lifespan L80/B50 at 25 C°	54.000 h

SERTİFİKALAR & STANDARTLAR / CERTIFICATES & STANDARDS

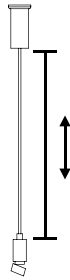
Koruma Sınıfı IK (Şok Direnci) / Protection Class IK (Shock Resistance)	IK 03
Sertifikasyon / Certification	ISO 9001, LVD, EMC, CE, RoHS



EKİPMAN & AKSESUARLAR / EQUIPMENT & ACCESSORIES



Tavan Bağlantı Klipsi-Tekli / Ceiling Fastening Clip-Single






Askı Teli / Suspended Wire



LED Tüp / LED Tube

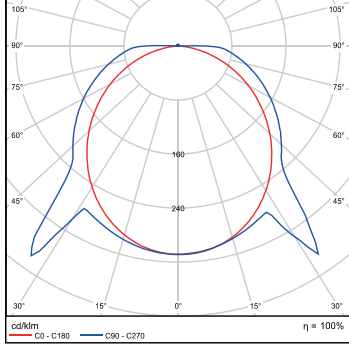
OPSİYONLAR / OPTIONS

 Askı Teli /Suspended Wire	0,4mm paslanmaz yay çeliğinden üretilir. Vidalama veya askı için uygundur. Max. yük taşıma 9kg'dır./It is produced from 0,4mm stainless spring steel. Suitable for screwing or hanging. Max. load carrying is 9kg.
 Tavan Bağlantı Klipsi (Tekli) / Ceiling Fastening Clip (Single)	0,4mm galvanizli paslanmaz metalden üretilir. Armatürler arası kolay bağlantı sağlar. Esneme yapmaz./It is produced from 0,4mm galvanized stainless metal. It provides easy connection between luminaires. Does not yawn.
 T5 LED Tüp / T5 LED Tube	>50.000h ömür, floresana göre %80'e yakın tasarruf, hareket-ışık sensörü ve dahili 1-3 saat acil kite sahiptir./Lifespan >50.000h, savings of nearly 80% compared to fluorescent, motion-light sensor and 1-3 hours emergency kit.

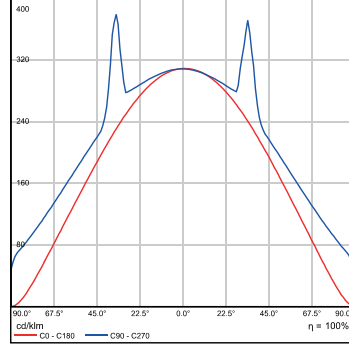
TESTLER / TESTS

Işık Dağılımı/ Light Distribution

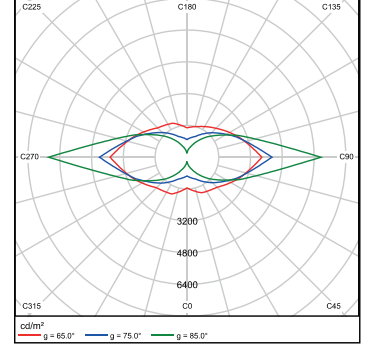
Işık Yayımları 1 - Polar LVK Light Light
Emission 1 - Polar LVK



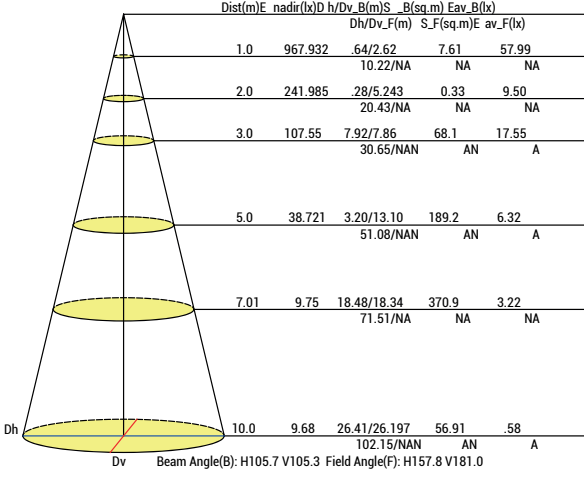
Işık Yayımları 1 - Lineer LVK
Light emission 1 - Polar LVK



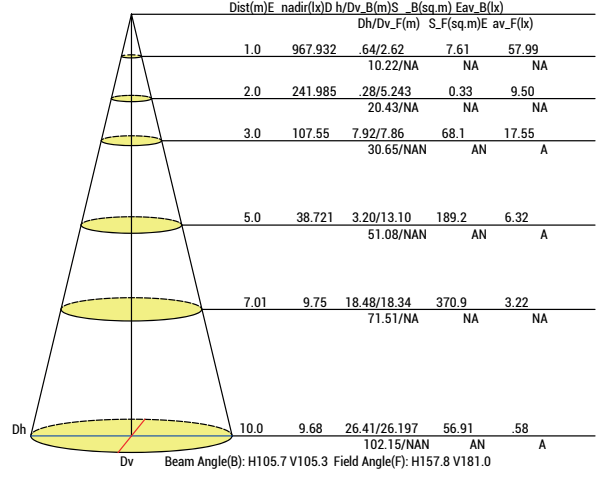
Işık Yayımları 1 - Işıklık Diagramı
Light emission 1 - Skylight Diagram



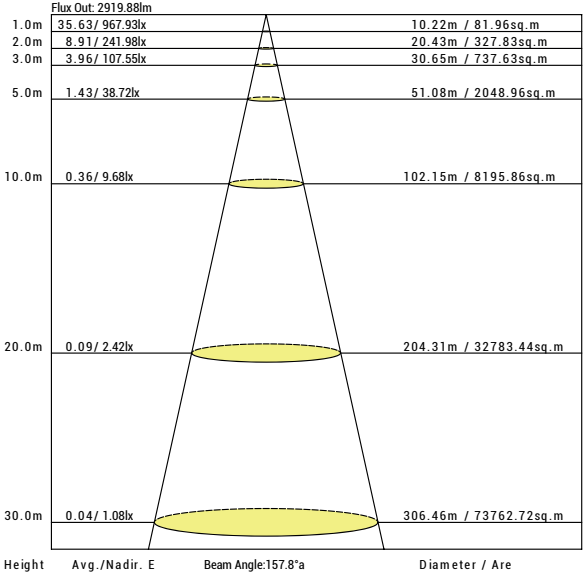
Uzaktaki Parlaklık (Işın Açısı) / Illuminance at a Distance (Beam Angle)



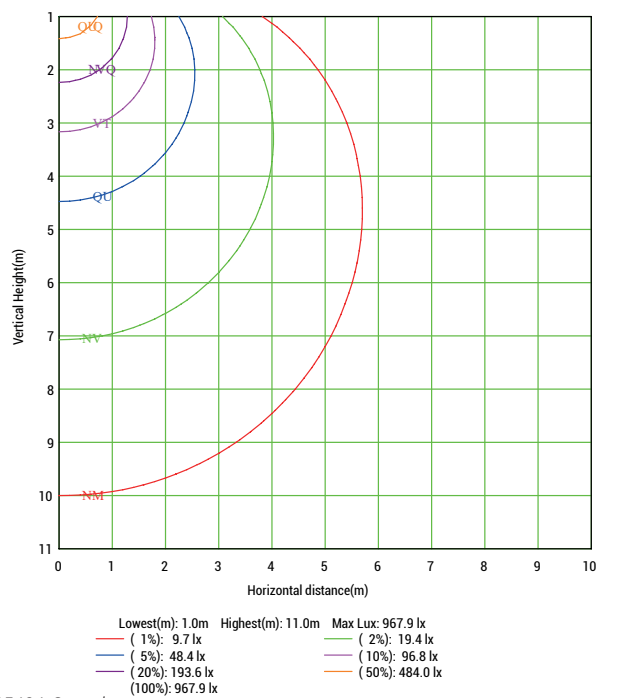
Uzaktaki Parlaklık (Alan Açısı) / Illuminance at a Distance (Field Angle)



Ortalama Aydınlık Etkili Şekil / The Average Illuminance Effective Figure

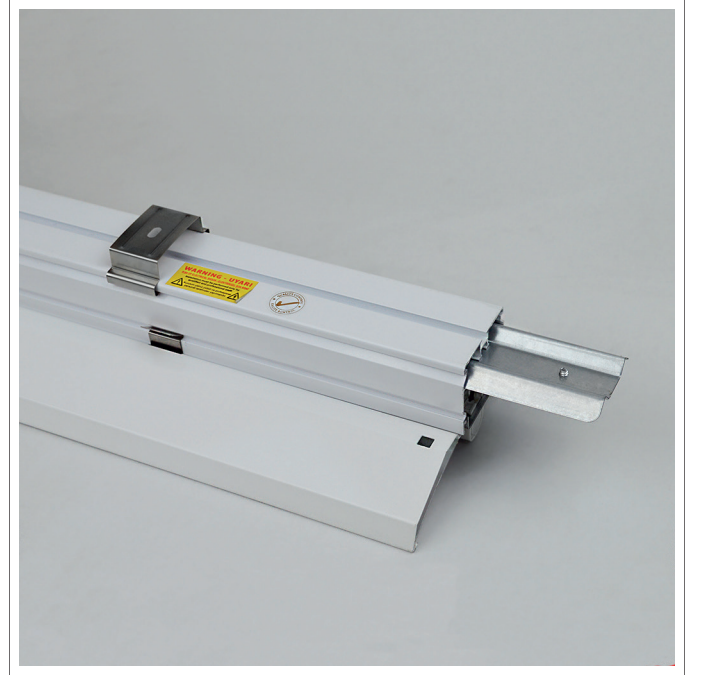


Dikey IsoLux Grafiği / Vertical IsoLux Plot



*LED LINE 1xT5 35-35424-S ürünün ölçümleridir. / *The measurements of the LED LINE 1xT5 35-35424-S product.

ÜRÜN FOTOĞRAFLARI / PRODUCT PHOTOS



REFERANSLAR & LİNKLER / REFERENCES & LINKS



www.karmalighting.com



KARMA Lighting



karma.lighting



KarmaLighting



karma.lighting.global



Karma LED Lighting